



person to person  
transforming  
**LIVES**  
luncheon

Dear Friend,

We are pleased to present Person to Person's (P2P) annual Transforming Lives Luncheon on October 27, 2022, featuring Emmy award-winning television host, best-selling cookbook author, and restaurateur Lidia Bastianich. Joining Lidia in conversation will be James Beard award winner and owner of Aux Delices, Debra Ponzek.

We invite you to join us as a sponsor of this event, which we expect to attract more than 300 guests. Not only will a sponsorship provide visibility for your brand and align your business with a respected nonprofit agency, but your tax-deductible gift to Person to Person goes directly to programs that meet our mission of achieving educated, financially stable, and hunger-free homes for all, including:

- healthy food to prepare over 2 million meals annually;
- college scholarships and adult mentors for first-generation students;
- enriching summer camp experiences that offer safe summer childcare and peace of mind;
- financial assistance to promote housing and economic stability;
- support for children and families through infant layettes, holiday toys, clothing, and more.

P2P Event Sponsorship offers substantial community engagement and visibility for your business. All sponsorships include logo recognition at the event and across our digital platforms, including social media shout-outs and our monthly E-newsletter, reaching over 10k people.

I invite you to review the attached sponsorship information. We welcome the opportunity to create a custom package for you across multiple opportunities. Turn our dedicated, socially-minded audience into your new, loyal customers while branding your business as an investor in Fairfield County and of social responsibility!

Most importantly, when you support P2P with a Sponsorship, you help ensure that we can bring food, security, and hope for a brighter future to thousands of people in our community.

Thank you,

Nancy Coughlin  
CEO, Person to Person

LEARN MORE @ [p2pHelps.org/TLL](https://p2pHelps.org/TLL)

Contact Nancy Coughlin @ 203.621.0680 or [nancycoughlin@p2pHelps.org](mailto:nancycoughlin@p2pHelps.org)

### Event Co-Chairs

Christina Johnson-Wolff | Michelle Lappas

### Committee

Nancy-Jean Bono | Andrew Brown | Kim Brown  
Cathy de Graaff | Allison Gagliardi | BJ Gedney  
Mimi Griffith | Noelle Heffernan | Eden Huang  
Caroline Moran | Angela Riley | Holly Shulz  
Julianna Spain | Eileen Sussan





person to person  
transforming  
**LIVES**  
luncheon

## SPONSORSHIP OPPORTUNITIES

### \$25,000 PLATINUM SPONSOR

- Two (2) tables for 10 with premium seating
- Recognition as Platinum Sponsor on event materials, including signage, press release, digital program, and social media
- Includes VIP "Meet & Greet" with Lidia with photo opportunity
- Full 'page' ad in digital event program
- Exclusive: Limited to One (1) Sponsor

### \$15,000 GOLD SPONSOR

- One (1) table for 10 with premium seating
- Recognition as Gold Sponsor on event materials, including signage, press release, digital program, and social media
- Includes VIP "Meet & Greet" with Lidia with photo opportunity
- Full 'page' ad in digital event program
- Exclusive: Limited to Two (2) Sponsors

### \$10,000 SILVER SPONSOR

- One (1) table for 10 with preferred seating
- Recognition as Silver Sponsor on event materials, including signage, press release, digital program, and social media
- Full 'page' ad in digital event program

### \$5,000 BRONZE SPONSOR

- One (1) table for 10
- Recognition as Bronze Sponsor on event materials, including signage, press release, digital program, and social media
- Logo in digital event program

## VIP TICKETS: MEET LIDIA

### \$1,000 = Dine with Lidia

- Includes one (1) ticket to pre-event Meet & Greet and personally autographed book and one (1) seat at Lidia's table
- Limited availability; first come, first serve

### \$500 = Meet & Greet with Lidia

- Includes personally autographed book
- Includes photo opportunity with Lidia
- Includes general seating for lunch
- Limited availability; first come, first serve

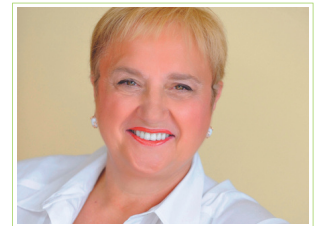
*NOTE: All attendees will receive an autographed copy of "Lidia's a Pot, a Pan, and a Bowl" cookbook. Must be in attendance to receive book.*

Person to Person serves 28,000 residents in Fairfield County each year with the essential resources and casework support to create a pathway to economic stability. [p2pHelps.org](http://p2pHelps.org)

### Person to Person Transforming Lives Luncheon

October 27, 2022  
Greenwich Country Club  
19 Doubling Road, Greenwich

*featured guest*  
**Lidia Bastianich**



*Lidia Bastianich is an Emmy award-winning public television host, a best-selling cookbook author, restaurateur, and owner of a flourishing food and entertainment business.*

### TABLES & TICKETS

One Table for 10 = \$2,500  
Individual Ticket = \$250

### SPONSORSHIP DEADLINE

August 25, 2022

### CONTACT

Nancy Coughlin  
203.621.0680  
[nancycoughlin@p2pHelps.org](mailto:nancycoughlin@p2pHelps.org)

**[p2pHelps.org/TLL](http://p2pHelps.org/TLL)**





person to person  
transforming  
**LIVES**  
luncheon

**SPONSOR & TICKET FORM**

- \$25,000 PLATINUM SPONSOR\*
- \$15,000 GOLD SPONSOR\*
- \$10,000 SILVER SPONSOR
- \$5,000 BRONZE SPONSOR
- \$1,000 VIP Ticket: Dine with Lidia\*
- \$500 VIP Ticket: Lidia Meet & Greet\*
- \$2,500: Table for 10
- \$250: Individual Ticket

Person to Person  
Transforming Lives Luncheon

October 27, 2022  
Greenwich Country Club  
19 Doubling Road, Greenwich

*featured guest*  
**Lidia Bastianich**

To pay by check or credit card, complete this form and email to Nancy Coughlin at [nancycoughlin@p2pHelps.org](mailto:nancycoughlin@p2pHelps.org) OR register by phone (203.621.0680) or online ([p2pHelps.org/TLL](http://p2pHelps.org/TLL))

*\*Please note that these items have limited availability. If Sold Out when P2P receives the form, a member of our team will reach out to you.*

Name \_\_\_\_\_  Personal  Business

Address \_\_\_\_\_ City \_\_\_\_\_ State \_\_\_\_\_ ZIP \_\_\_\_\_

Cell Phone \_\_\_\_\_ Home/Work Phone \_\_\_\_\_ Email \_\_\_\_\_

I am unable to attend, but would like to make a 100% tax deductible contribution to P2P  
 \$2,500  \$1,000  \$500 Other \$\_\_\_\_\_

**Payment type:**

Check enclosed (made payable to "Person to Person")

Credit Card:  Visa  MasterCard  American Express  Discover

*Please add the 3% processing fee so Person to Person receives 100% of my donation*

Account # \_\_\_\_\_ Security Code \_\_\_\_\_

Expiration Date \_\_\_\_\_ Signature \_\_\_\_\_

Person to Person serves 28,000 residents in Fairfield County each year with the essential resources and casework support to create a pathway to economic stability. [p2pHelps.org](http://p2pHelps.org)

